

# VISION 1 RACING

## 02-06 QR25 6spd Scattershield

While installation is pretty straight forward, there is one small modification needed for clearance.

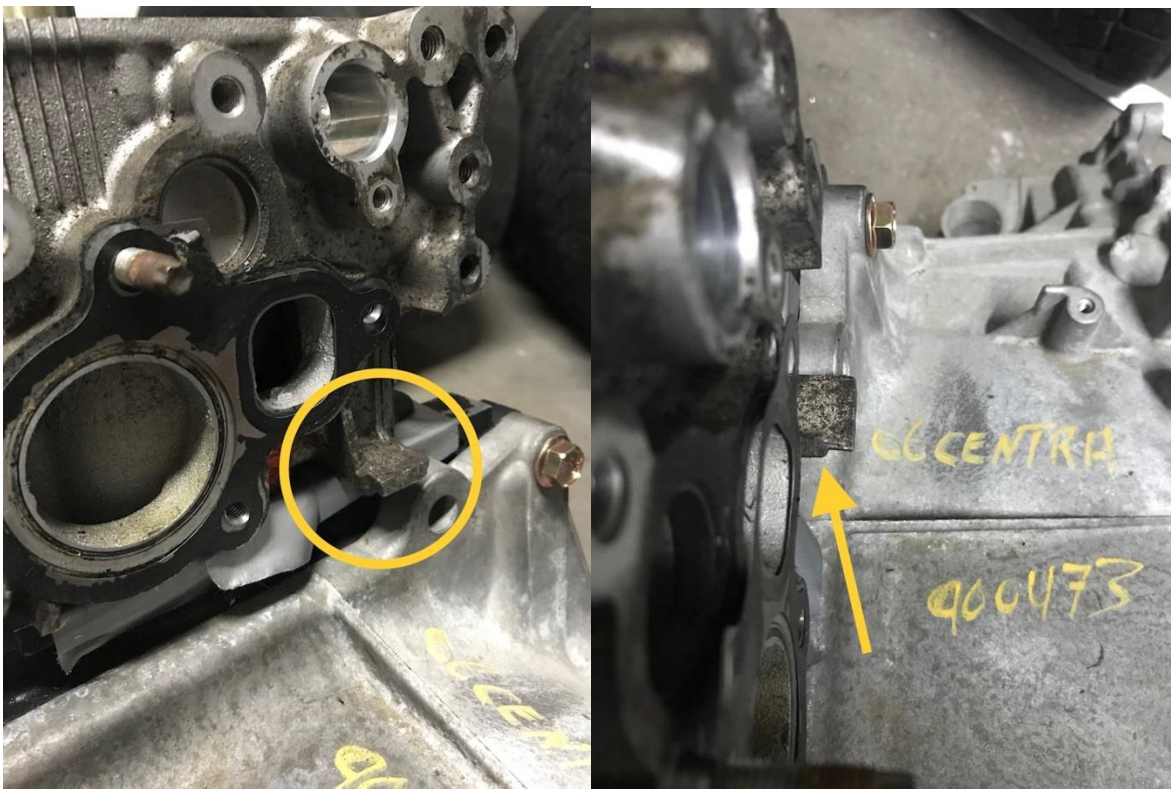
Be sure to disconnect the battery before install.

It will be easiest to drain the coolant and remove the upper radiator hose, water control valve housing and the heater pipe.

If removing any intake or charge pipe, be sure to cover with a rag to keep out debris.

Remove the two upper bellhousing bolts as well as the front, lower bellhousing bolt located just under the starter.

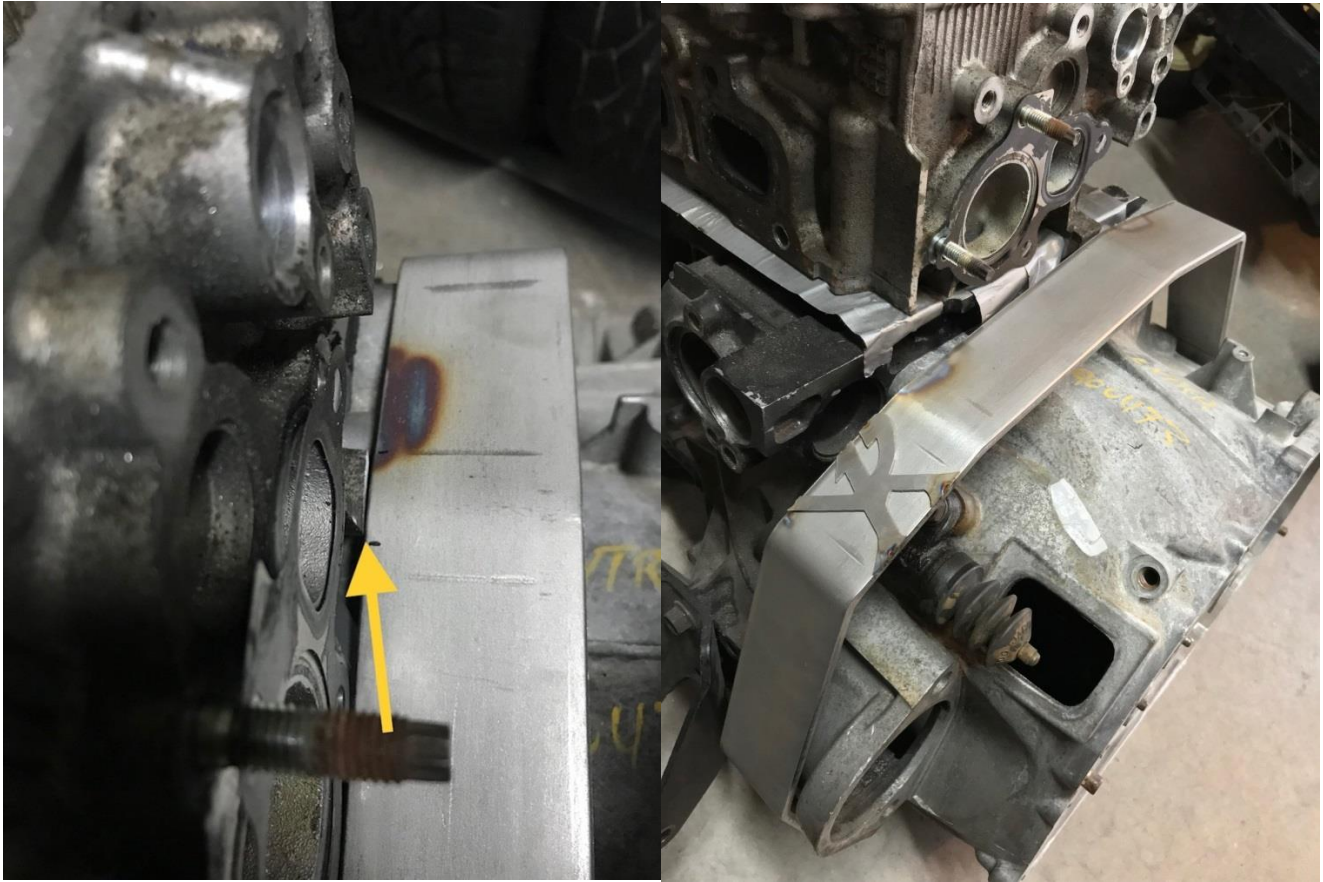
From here you'll need to remove about 1/4" from a casting tab on the cylinder head. This will need to be flush or just under flush from the surface of the upper bellhousing mounting bolts. (see photos)



Install scattershield by placing the front mounting tab underneath the starter and then position the rear into place.

Reinstall all 3 bellhousing bolts.

Verify that there is visible clearance between cylinder head and scattershield with mounting bolts tight.



Reinstall all other components and enjoy no longer being questioned in the tech line!

Thank you for your support!

Any questions can be directed toward [VisionOneRacing@gmail.com](mailto:VisionOneRacing@gmail.com)

I will respond as soon as possible